



# B.K. BIRLA CENTRE FOR EDUCATION

SARALA BIRLA GROUP OF SCHOOLS  
A CBSE DAY-CUM-BOYS' RESIDENTIAL SCHOOL

Pre Mid Term (2025-26)  
SUBJECT: EVS(Ans key)

Class: III

Date: 02/08/2025

Admission no.:

General Instructions:

Duration: 1 hr

Max Marks: 25

Roll no. :

\* Attempt questions based on specific instructions for each part.

## I. Fill in the blanks.

1 x 5

( Fibrous, seeds, stomata, strangers, fins )

1. Fish use their fins to swim.
2. We should not open the door for strangers, when we are alone at home.
3. Fruits protect the seeds inside them.
4. Plants breathe through the stomata.
5. Fibrous roots appear bushy.

## II. Match the following.

1 x 5

A

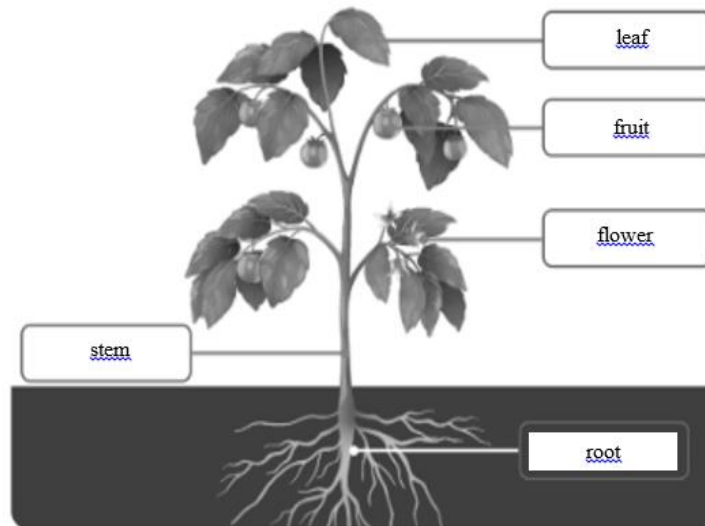
B

- |                            |   |                          |
|----------------------------|---|--------------------------|
| 1. subway                  | c | a. Beetroot              |
| 2. Edible roots            | a | b. move on their own     |
| 3. Green pigment in leaves | d | c. Cross the road        |
| 4. footpath                | e | d. Chlorophyll           |
| 5. living beings           | b | e. walk on the road side |

### III Answer these questions.

2 x 3

1. Label the parts of the plant.



2. Write any two safety rules to stay safe while you are in the school.

Ans 1. Don't push each other or throw things  
2. Do not climb or jump on the desks or run in the classroom.

3. Write the difference between living beings and non living things.

Ans

Living beings	Non- living things
Living beings move on their own	Non- living things move on their own
Living beings can reproduce	Non- living things can not reproduce
Living beings need food and water to live, grow and get energy.	Non- living things do not need food or water.

#### IV Answer these questions.

3 x 3

1. Write any three safety rules that should be followed at home.

Ans . Stay away from hot objects in the kitchen. They can cause burns.

Do not pull plastic bags, bedsheets, or towels over your head. You can suffocate.

Always take medicines in the presence of an adult and not on your own.

#### 2. List any three functions of roots in plants.

1. Roots anchor the plant to the soil. They hold the soil together, so it does not get washed away by rain
2. They take in water and nutrients from the soil, which are used by plants to grow and make food.
3. Some roots like radish , beetroot, turnip store food in them. They are edible.

#### 3. Observe the image given below and answer the questions.



1. Name any two living beings and non- living things.

Ans Two living beings - 1. birds 2. children 3. dog

Non- living things - 1. ball 2. see-saw 3. fence

2. Which living beings in the image can make their own food.

Ans       Plants and trees can make their own food.